

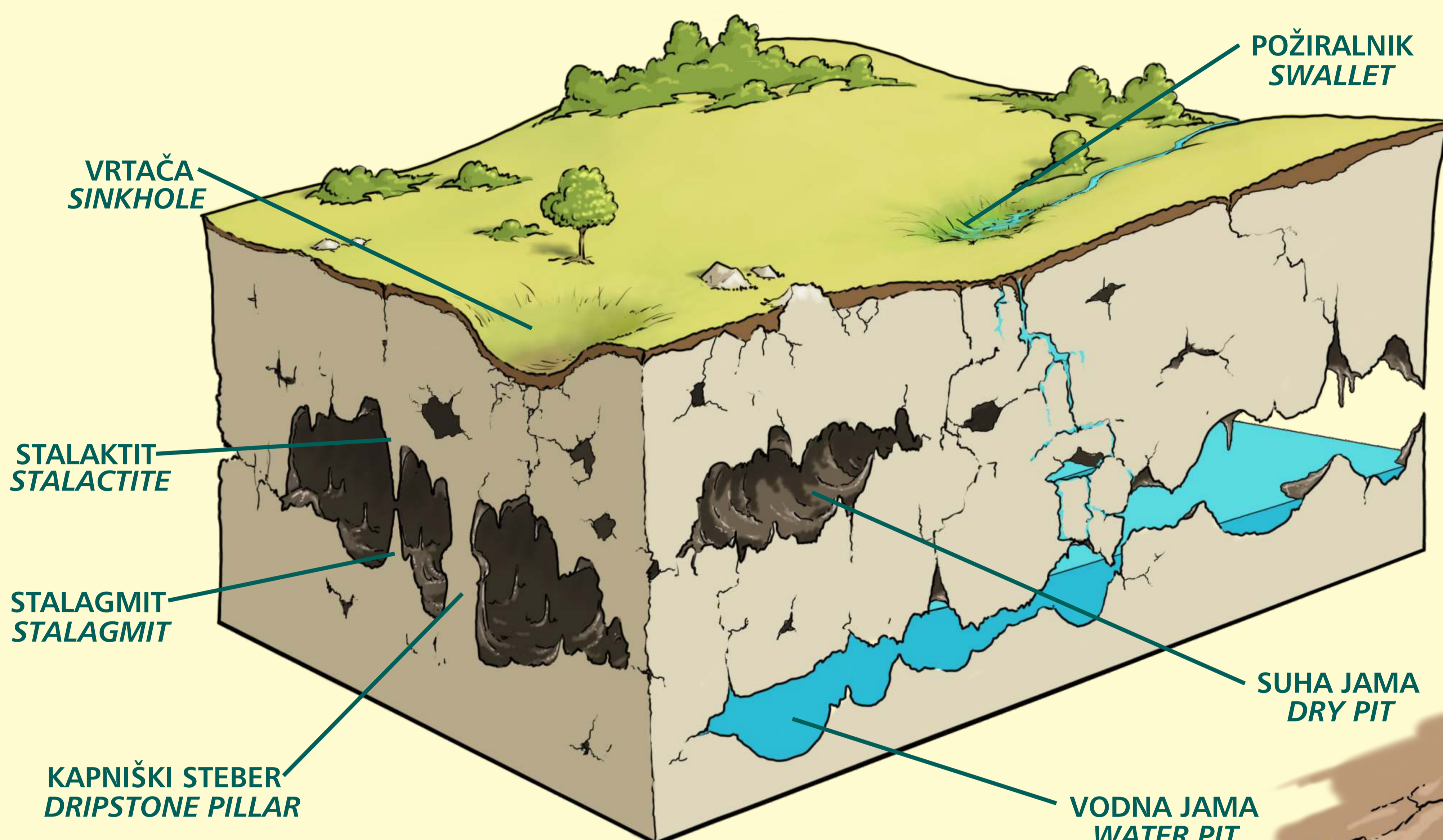
KRAS JE VEDNO ŽIV

Narava s pomočjo vode počasi, a vztrajno ustvarja umetnine v apnencu.

Apnenec je vodotopna kamenina, ki je v milijonih let nastala kot morska usedlina in se zaradi tektonskih premikov dvignila na površje. Na apnencu se je razvila pokrajina z značilnimi kraškimi pojavi, imenovana kras.

Ob premikih in prelomih so na površju in v podzemlju nastale številne razpoke, skozi katere pronica voda. Ko se ta obogati z ogljikovim dioksidom, nastane šibka ogljikova kislina, ki raztoplja apnenec. Tako nastajajo najrazličnejše površinske in podzemeljske oblike kraških pojavov.

Na površju ob poti lahko vidimo vrtače in žlebiče, v bližini se nahajajo tudi požiralniki in manjše kraško polje. Najbolj zanimiv kraški pojav ob poti je jama Pekel, kjer voda raztopljeni apnenec odlaga v različnih kapniških oblikah.



Od časov, ko so po rimski cesti skozi bližnji Šempeter potovali Rimljani, se je površje na krasu znižalo od 2 do 10 cm.

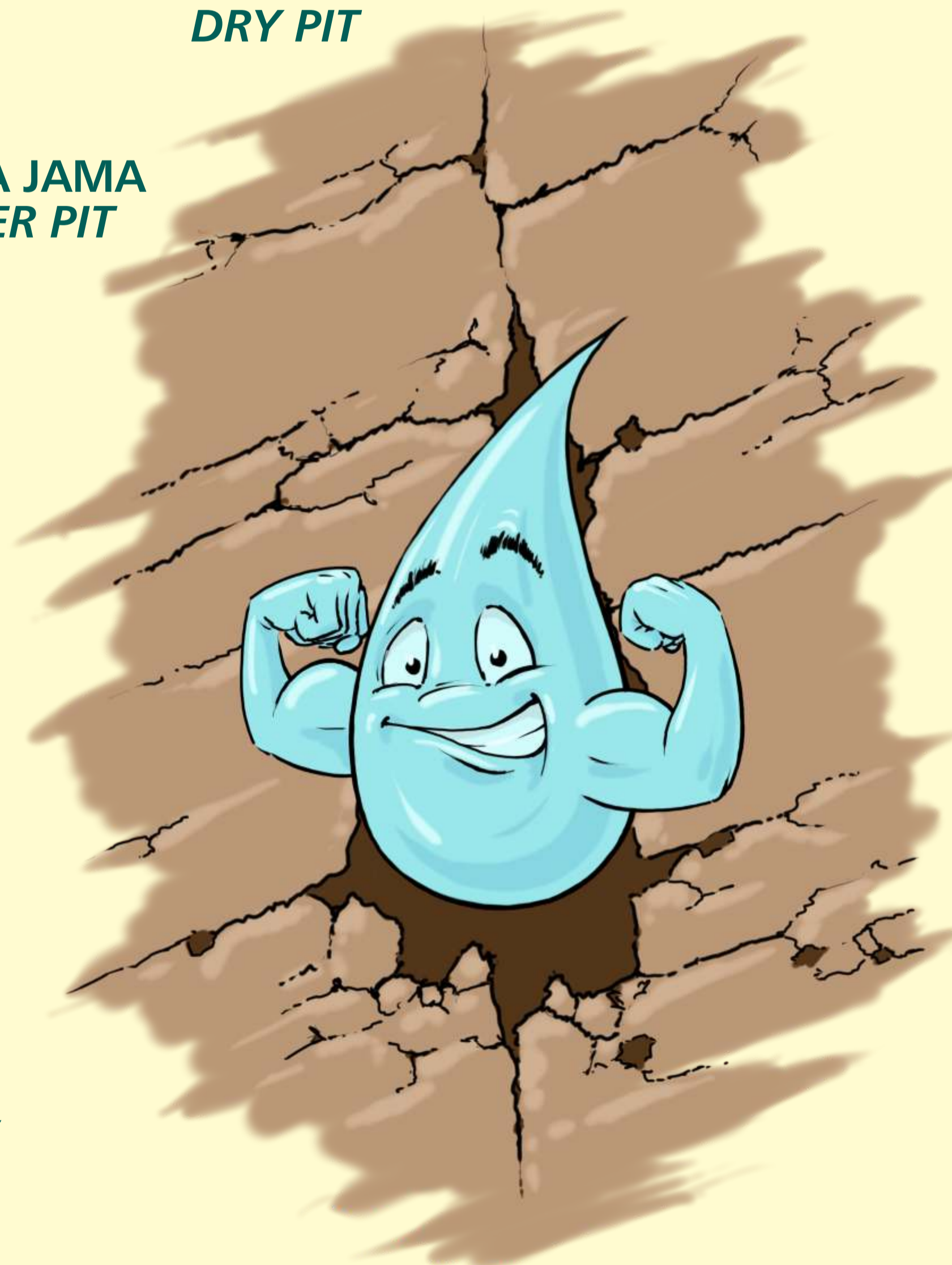
KARST IS ALWAYS ALIVE

Nature slowly and persistently creates works of art in limestone, using nothing but water.

Limestone is a water-soluble rock, formed through millions of years as sea sediment that was lifted to the surface due to tectonic plate movements. On limestone, a landscape with typical karstic phenomena was formed, called karst.

After tectonic movements and breaks, several cracks were formed on the surface and underground, through which water leaks. When the water is enriched by carbon dioxide, a weak carbon acid is formed that dissolves the limestone. This is how different types of karstic phenomena are formed above and below ground.

Along the path one can see sinkholes and rills, and there are swallets and a small karst field in the vicinity. The most interesting karstic phenomenon is the Pekel cave, where water is depositing the dissolved limestone in the form of various dripstone shapes.

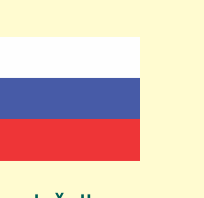
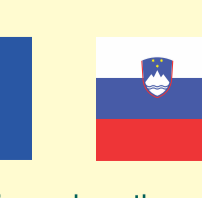


Since the times when the Romans travelled along the Roman road through the nearby Šempeter, the surface has dropped by 2 to 10 cm.

Prijavitelj Celjsko gozdarsko društvo in partnerji:



Operacijo sofinancira:



Evropski kmetijski sklad za razvoj podeželja: Evropa investira v podeželje